

**[Ewha Womans University AI-Biotech Seminar]**  
**Building Tomorrow's Healthcare - LLM, genAI, Agentic  
AI, and Human-Centered Innovation**

**Sunghee Yun**

**Co-Founder & CTO - AI Technology & Biz Dev @ [Erudio Bio, Inc.](#)**

**Advisor & Evangelist - Biz Dev @ [CryptoLab, Inc.](#)**

**Adjunct Professor & Advisory Professor @ Sogang Univ. & DGIST**

## About Speaker

- *Co-Founder & CTO @ Erudio Bio, San Jose & Novato, CA, USA*
- *Advisor & Evangelist @ CryptoLab, Inc., San Jose, CA, USA*
- Chief Business Development Officer @ WeStory.ai, Cupertino, CA, USA
- Advisory Professor, Electrical Engineering and Computer Science @ DGIST, Korea
- Adjunct Professor, Electronic Engineering Department @ Sogang University, Korea
- Global Advisory Board Member @ Innovative Future Brain-Inspired Intelligence System Semiconductor of Sogang University, Korea
- *KFAS-Salzburg Global Leadership Initiative Fellow @ Salzburg Global Seminar, Salzburg, Austria*
- Technology Consultant @ Gerson Lehrman Group (GLG), NY, USA
- *Co-Founder & CTO / Head of Global R&D & Chief Applied Scientist / Senior Fellow @ Gauss Labs, Inc., Palo Alto, CA, USA*  
2020 – 2023

- Senior Applied Scientist @ Amazon.com, Inc., Vancouver, BC, Canada – 2020
- Principal Engineer @ Software R&D Center, DS Division, Samsung, Korea – 2017
- Principal Engineer @ Strategic Marketing & Sales Team, Samsung, Korea – 2016
- Principal Engineer @ DT Team, DRAM Development Lab, Samsung, Korea – 2015
- Senior Engineer @ CAE Team, Samsung, Korea – 2012
- PhD - Electrical Engineering @ Stanford University, CA, USA – 2004
- Development Engineer @ Voyan, Santa Clara, CA, USA – 2001
- MS - Electrical Engineering @ Stanford University, CA, USA – 1999
- BS - Electrical & Computer Engineering @ Seoul National University 1994 – 1998

## Highlight of Career Journey

- BS in EE @ SNU, MS & PhD in EE @ Stanford University
  - *Convex Optimization - Theory, Algorithms & Software*
  - advised by *Prof. Stephen P. Boyd*
- Principal Engineer @ Samsung Semiconductor, Inc.
  - AI & Convex Optimization
  - collaboration with *DRAM/NAND Design/Manufacturing/Test Teams*
- Senior Applied Scientist @ Amazon.com, Inc.
  - e-Commerce AIs - anomaly detection, deep RL, and recommender system
  - Jeff Bezos's project - boosted up sales by *\$200M* via Amazon Mobile Shopping App
- *Co-Founder & CTO* / Global R&D Head & Chief Applied Scientist @ Gauss Labs, Inc.
- *Co-Founder & CTO* - AI Technology & Business Development @ Erudio Bio, Inc.

## Today

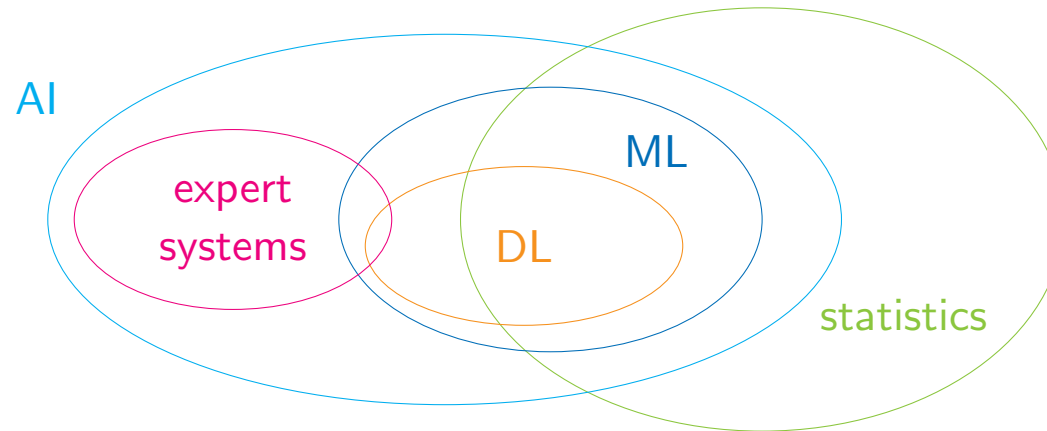
- Artificial Intelligence - 5
  - AI history & recent significant achievements
  - Market indicators for unprecedented AI progress
- AI Agents - 26
  - Big Data → ML/DL → LLM & genAI → Agentic AI
  - Implication of grand success of LLM in multimodal AI
- AI and Biotech - 34
  - AI in biology & AlphaFold 3
  - Emerging Trends in Biotech
- Selected references - 54
- References - 56

# **Artificial Intelligence**

## **Definition and History**

## Definition & relation to other technologies

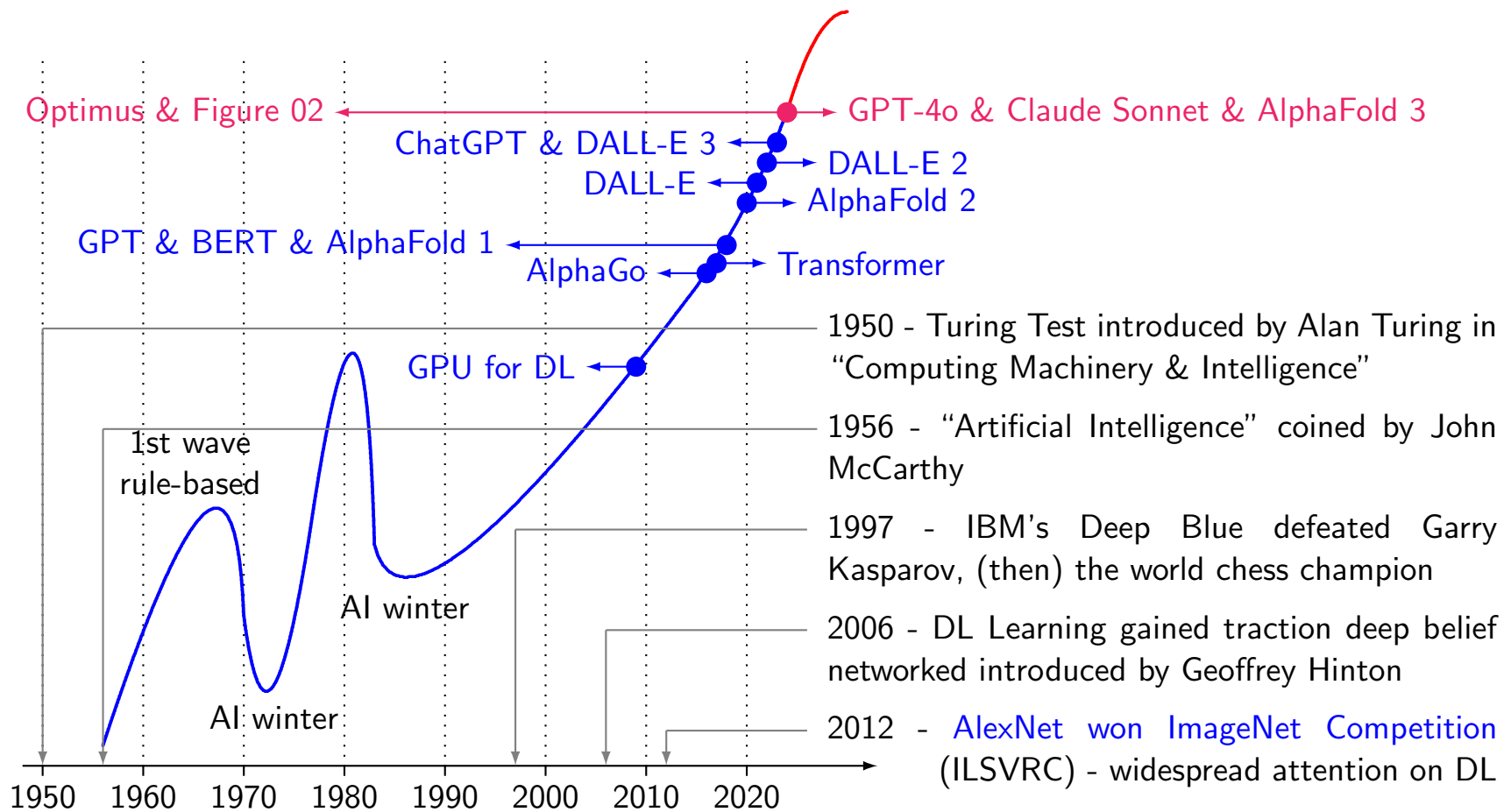
- AI
  - is technology doing tasks requiring human intelligence, such as learning, problem-solving, decision-making & language understanding
  - encompasses *range of technologies, methodologies, applications & products*
- AI, ML, DL, statistics & expert system<sup>1</sup> [HGH<sup>+</sup>22]



---

<sup>1</sup>ML: machine learning & DL: deep learning

# History



## **Significant AI Achievements - 2014 – 2025**

## Deep learning revolution

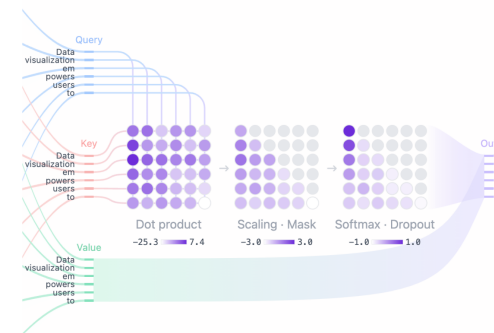
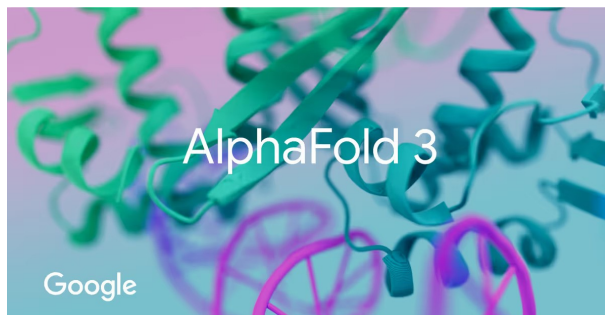
- 2012 – 2015 - DL revolution<sup>2</sup>
  - CNNs demonstrated exceptional performance in image recognition, *e.g.*, *AlexNet's victory in ImageNet competition*
  - widespread adoption of DL learning in CV transforming industries
- 2016 - AlphaGo defeats human Go champion
  - DeepMind's AlphaGo defeated world champion in Go, extremely complex game *believed to be beyond AI's reach*
  - significant milestone in RL - AI's potential in solving complex & strategic problems



<sup>2</sup>CV: computer vision, NN: neural network, CNN: convolutional NN, RL: reinforcement learning

## Transformer changes everything

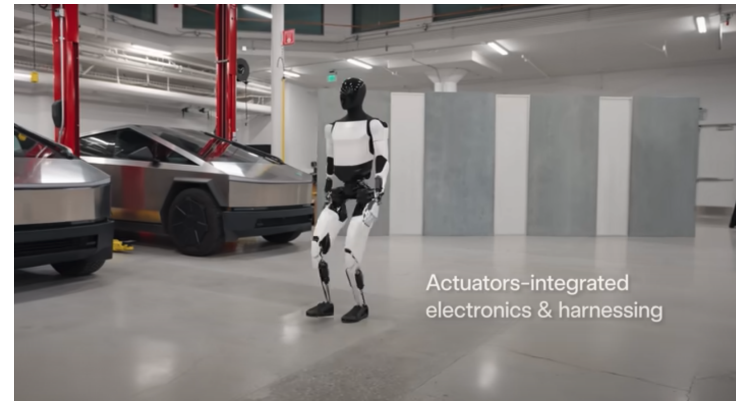
- 2017 – 2018 - Transformers & NLP breakthroughs<sup>3</sup>
  - *Transformer (e.g., BERT & GPT) revolutionized NLP*
  - major advancements in, e.g., machine translation & chatbots
- 2020 - AI in healthcare – AlphaFold & beyond
  - DeepMind's *AlphaFold solves 50-year-old protein folding problem* predicting 3D protein structures with remarkable accuracy
  - accelerates drug discovery and personalized medicine - offering new insights into diseases and potential treatments



<sup>3</sup>NLP: natural language processing, GPT: generative pre-trained transformer

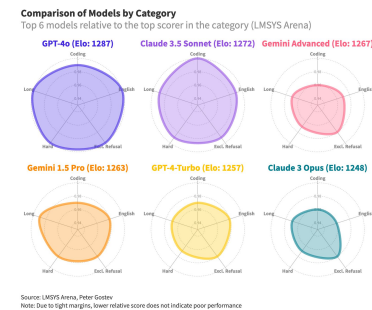
## Lots of breakthroughs in AI technology and applications in 2024

- proliferation of advanced AI models
  - GPT-4o, Claude Sonnet, Claude 3 series, Llama 3, Sora, Gemini
  - *transforming industries* such as content creation, customer service, education, *etc.*
- breakthroughs in specialized AI applications
  - Figure 02, Optimus, AlphaFold 3
  - driving unprecedented advancements in automation, drug discovery, scientific understanding - *profoundly affecting healthcare, manufacturing, scientific research*



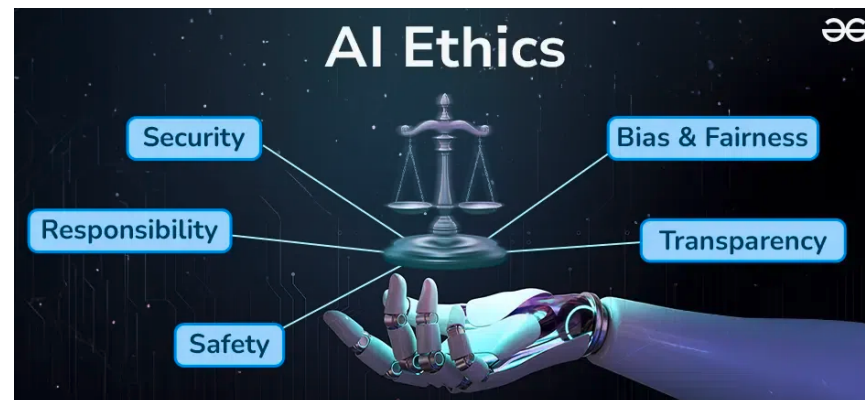
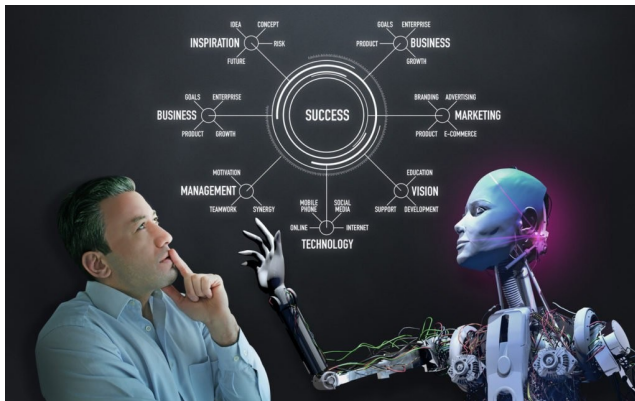
## Major AI Breakthroughs in 2025

- next-generation foundation models
  - GPT-5 and Claude 4 demonstrate emergent reasoning abilities
  - open-source models achieving parity with leading commercial systems from 2024
- hardware innovations
  - NVIDIA's Blackwell successor architecture delivering 3-4x performance improvement
  - AMD's MI350 accelerators challenging NVIDIA's market dominance
- AI-human collaboration systems
  - seamless multimodal interfaces enabling natural human-AI collaboration
  - AI systems effectively explaining reasoning and recommendations
  - augmented reality interfaces providing real-time AI assistance in professional contexts



## Transformative impact of AI - reshaping industries, work & society

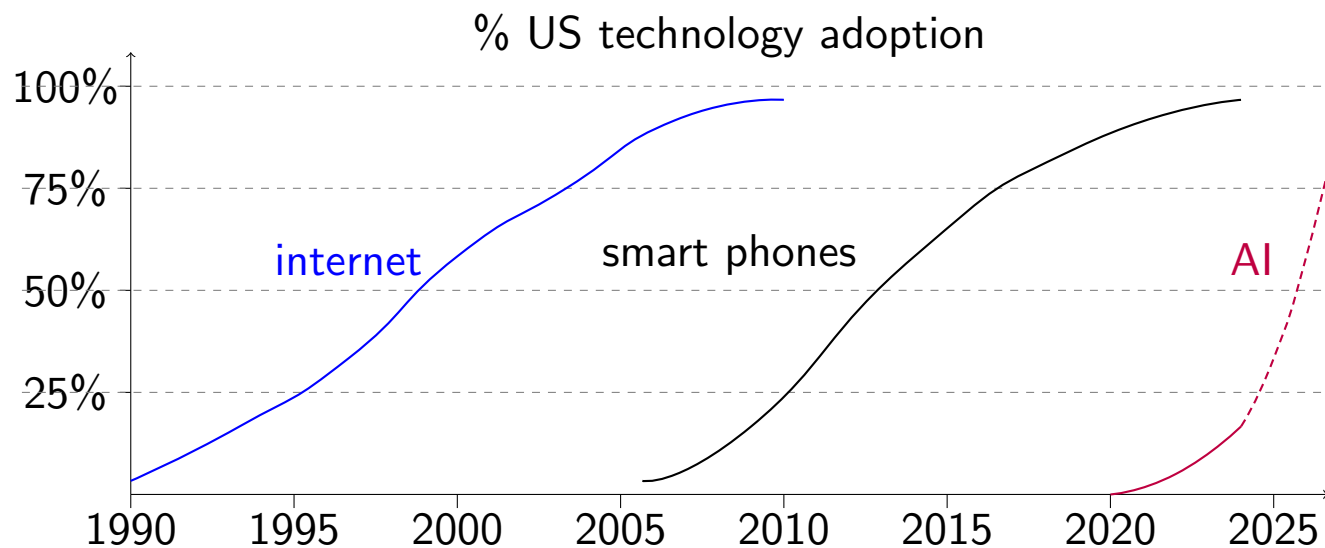
- accelerating human-AI collaboration
  - not only reshaping industries but *altering how humans interact with technology*
  - AI's role as collaborator and augmentor redefines productivity, creativity, the way we address global challenges, *e.g., sustainability & healthcare*
- AI-driven automation *transforms workforce dynamics* - creating new opportunities while challenging traditional job roles
- *ethical AI considerations* becoming central not only to business strategy, but to society as a whole - *influencing regulations, corporate responsibility & public trust*



# **Measuring AI's Ascent**

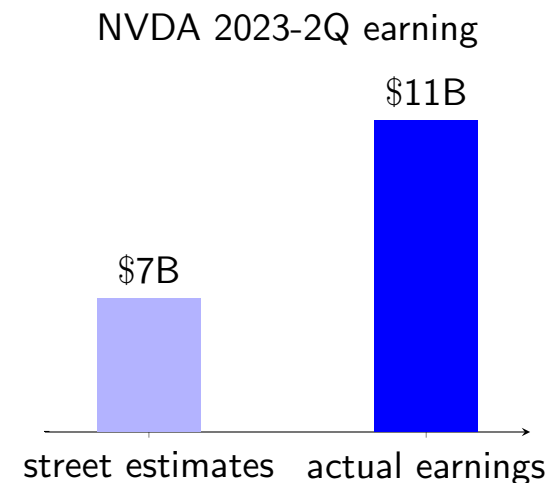
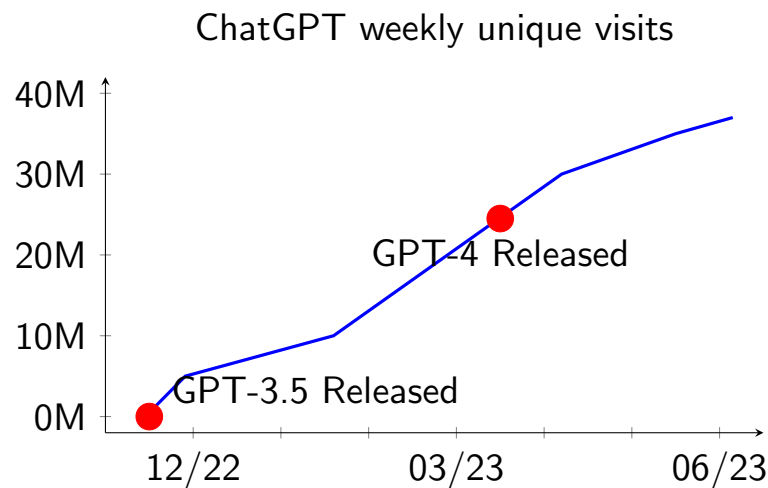
## Where are we in AI today?

- sunrise phase - currently experiencing dawn of AI era with significant advancements and increasing adoption across various industries
- early adoption - in early stages of AI lifecycle with widespread adoption and innovation across sectors marking significant shift in technology's role in society



## Explosion of AI ecosystems - ChatGPT & NVIDIA

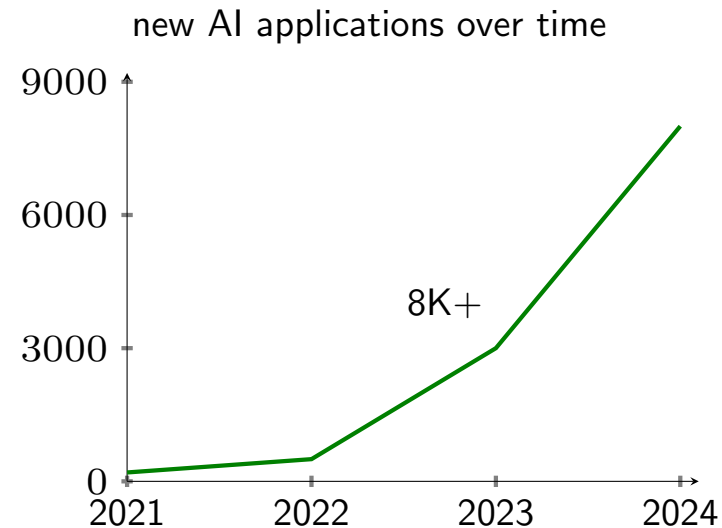
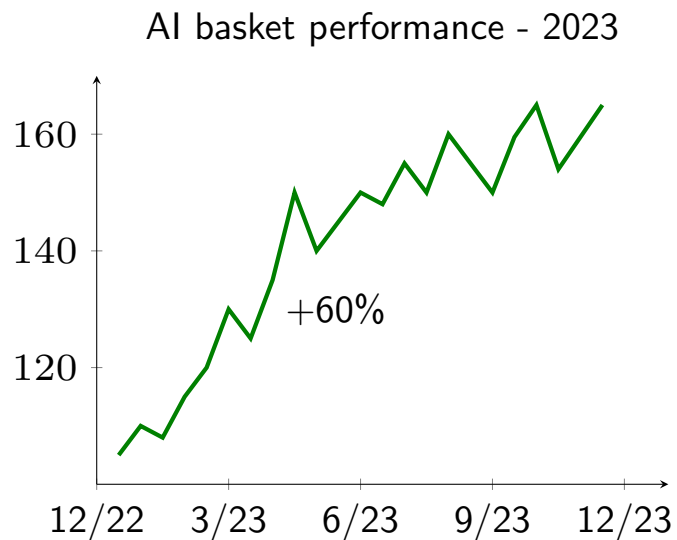
- took only *5 months for ChatGPT users to reach 35M*
- NVIDIA 2023 Q2 earning exceeds market expectation by big margin - \$7B vs \$13.5B
  - surprisingly, *101% year-to-year growth*
  - even more surprisingly *gross margin was 71.2%* - up from 43.5% in previous year<sup>4</sup>



<sup>4</sup>source - Bloomberg

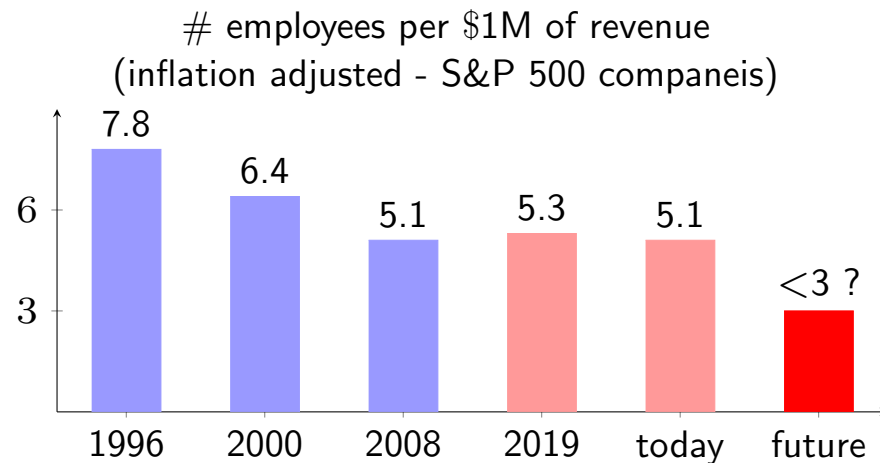
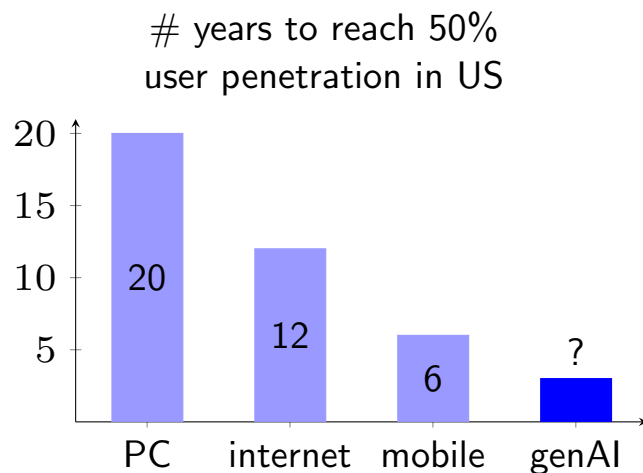
## Explosion of AI ecosystems - AI stock market

- *AI investment surge in 2023 - portfolio performance soars by 60%*
  - AI-focused stocks significantly outpaced traditional market indices
- *over 8,000 new AI applications* developed in last 3 years
  - applications span from healthcare and finance to manufacturing and entertainment



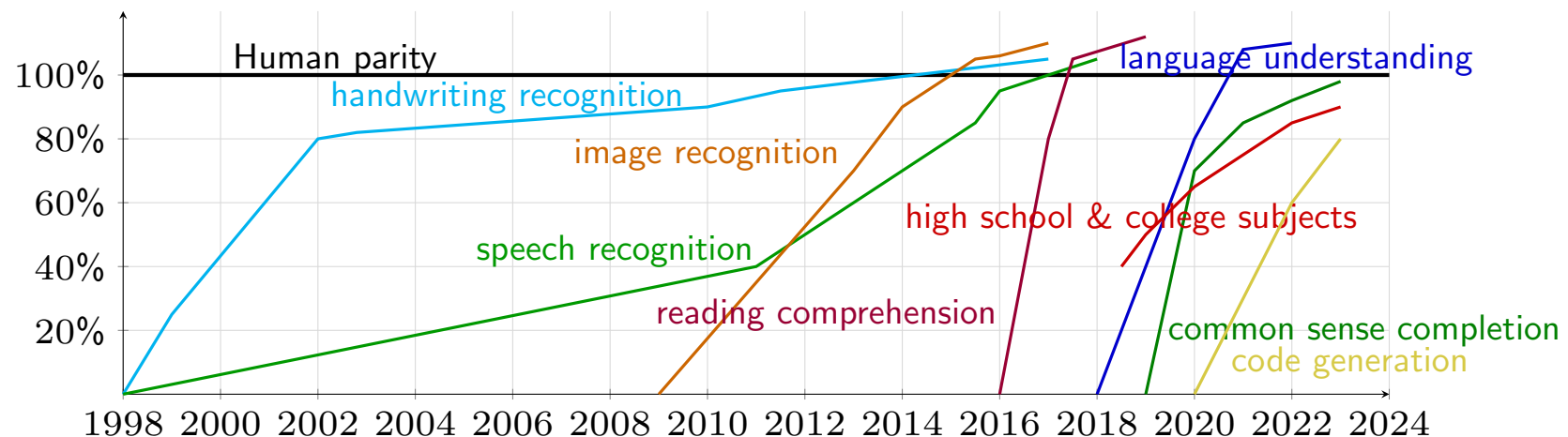
## AI's transformative impact - adoption speed & economic potential

- adoption - has been twice as fast with platform shifts suggesting
  - increasing demand and readiness for new technology improved user experience & accessibility
- AI's potential to drive economy for years to come
  - 35% improvement in productivity driven by introduction of PCs and internet
  - greater gains expected with AI proliferation



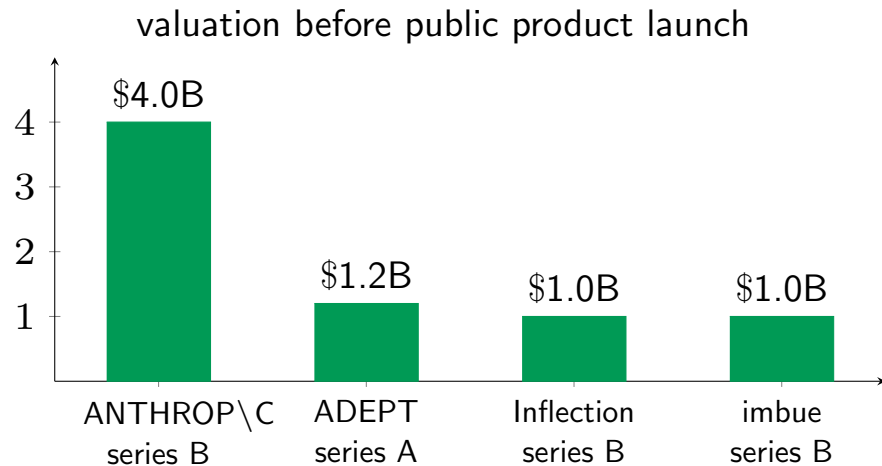
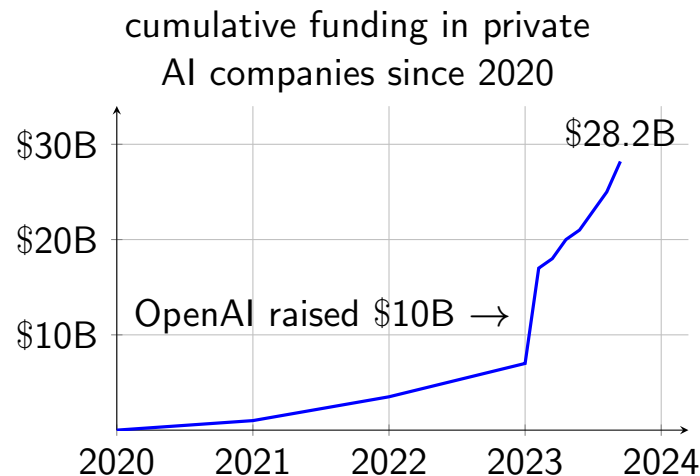
## AI getting more & more faster

- steep upward slopes of AI capabilities highlight accelerating pace of AI development
  - period of exponential growth with AI potentially mastering new skills and surpassing human capabilities at ever-increasing rate
- closing gap to human parity - some capabilities approaching or arguably reached human parity, while others having still way to go
  - achieving truly human-like capabilities in broad range remains a challenge



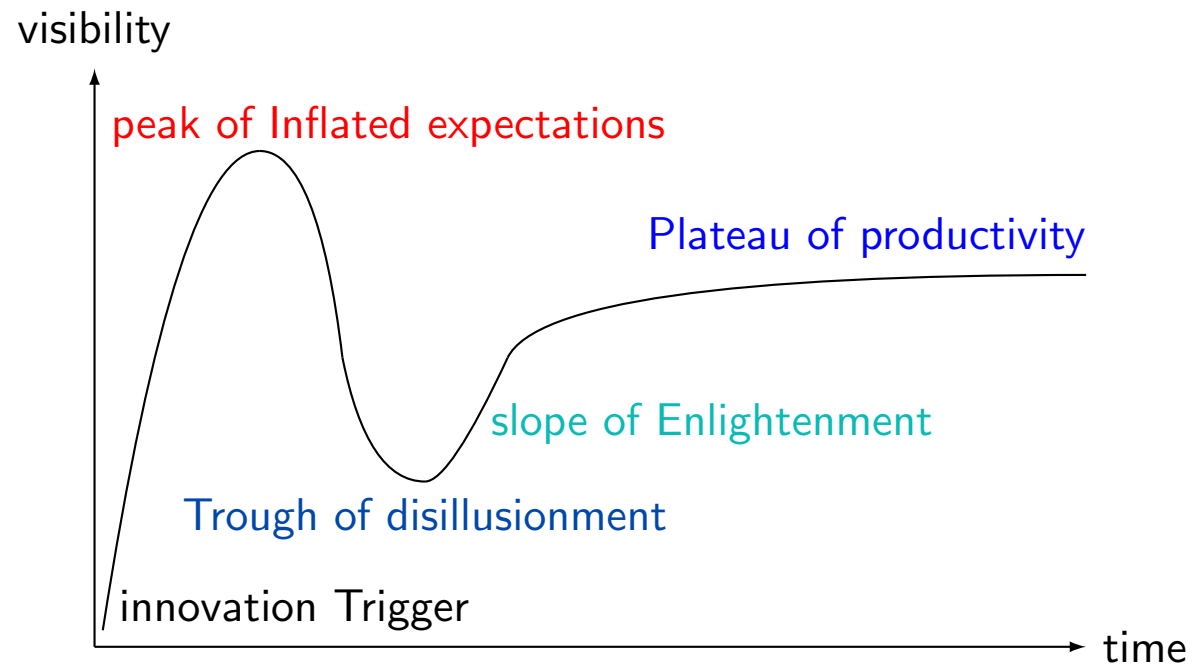
## Massive investment in AI

- *explosive growth* - cumulative funding skyrocketed reaching staggering \$28.2B
- OpenAI - significant fundraising (=\$10B) fueled rapid growth
- *valuation surge* - substantial valuations even before public products for stella companies
- *fierce competition for capital* among AI startups driving innovation & accelerating development
- massive investment indicates *strong belief in & optimistic outlook for potential of AI* to revolutionize industries & drive economic growth



**Is AI hype?**

## Technology hype cycle



- innovation trigger - technology breakthrough kicks things off
- peak of inflated expectations - early publicity induces many successes followed by even more
- trough of disillusionment - expectations wane as technology producers shake out or fail
- slope of enlightenment - benefit enterprise, technology better understood, more enterprises fund pilots

## Fiber vs cloud infrastructure

- fiber infrastructure - 1990s

- Telco Co's raised \$1.6T of equity & \$600B of debt
- bandwidth costs decreased 90% within 4 years
- companies - Covage, NothStart, Telligent, Electric Lightwave, 360 networks, Nextlink, Broadwind, UUNET, NFS Communications, Global Crossing, Level 3 Communications
- became *public good*

- cloud infrastructure - 2010s

- entirely new computing paradigm
- mostly public companies with data centers
- *big 4 hyperscalers generate* \$150B + annual revenue



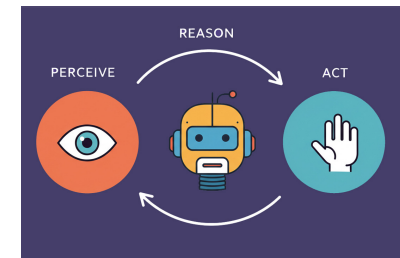
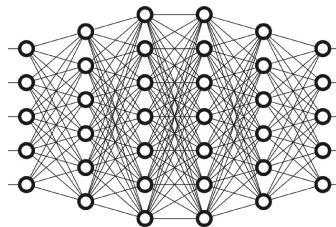
## Yes & No

characteristics of hype cycles	speaker's views
value accrual misaligned with investment	<ul style="list-style-type: none"><li>● OpenAI still operating at a loss; business model <i>still</i> not clear</li><li>● gradual value creation across broad range of industries and technologies (<i>e.g.</i>, CV, LLMs, RL) unlike fiber optic bubble in 1990s</li></ul>
overestimating timeline & capabilities of technology	<ul style="list-style-type: none"><li>● self-driving cars delayed for over 15 years, with limited hope for achieving level 5 autonomy</li><li>● AI, however, has proven useful within a shorter 5-year span, with enterprises eagerly adopting</li></ul>
lack of widespread utility due to technology maturity	<ul style="list-style-type: none"><li>● AI already providing significant utility across various domains</li><li>● vs quantum computing remains promising in theory but lacks widespread practical utility</li></ul>

# AI Agents

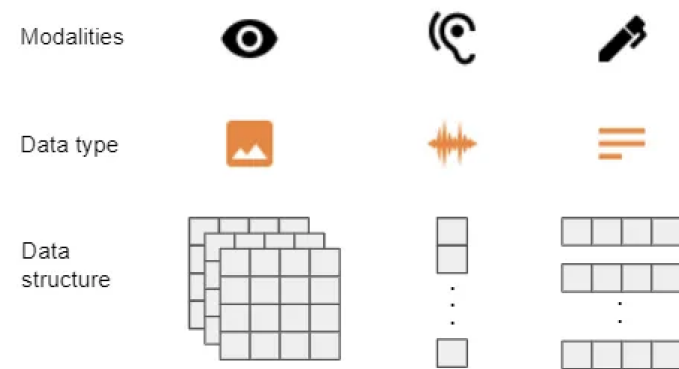
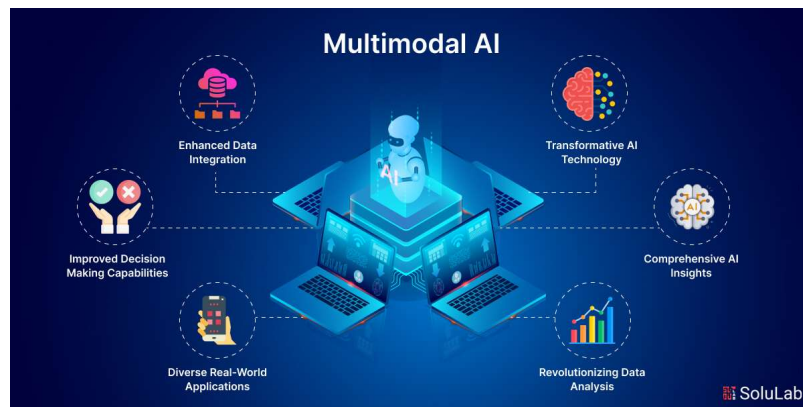
## AI progress in 21st century in keywords

- 2010 ~ Big Data
- 2012 ~ Deep Learning
- 2017 ~ Transformer - Attention is All you need!
- 2022 ~ LLM & genAI
- 2024 ~ AI Agent (Agentic AI)



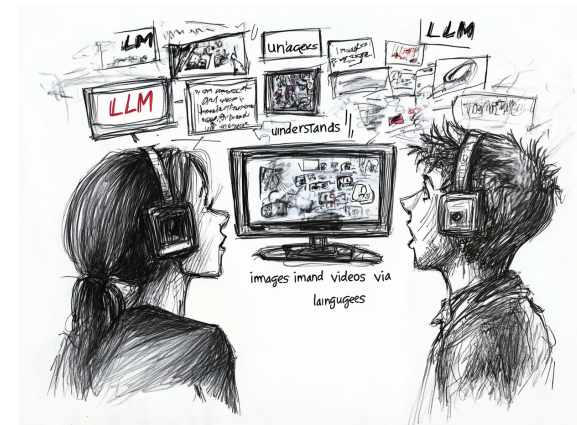
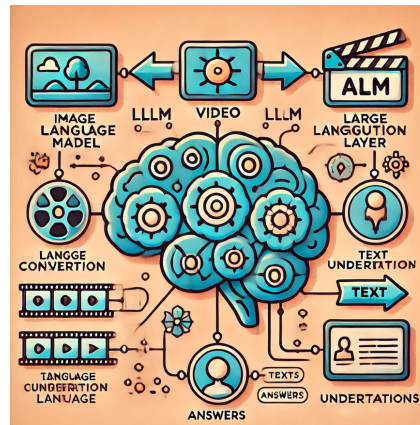
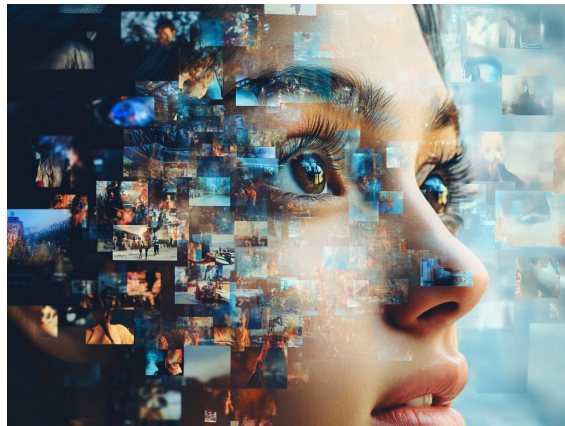
# Multimodal learning

- understand information from multiple modalities, *e.g.*, text, images, audio, video
- representation learning methods
  - combine multiple representations or learn multimodal representations simultaneously
- applications
  - images from text prompt, videos with narration, musics with lyrics
- collaboration among different modalities
  - understand image world (open system) using language (closed system)



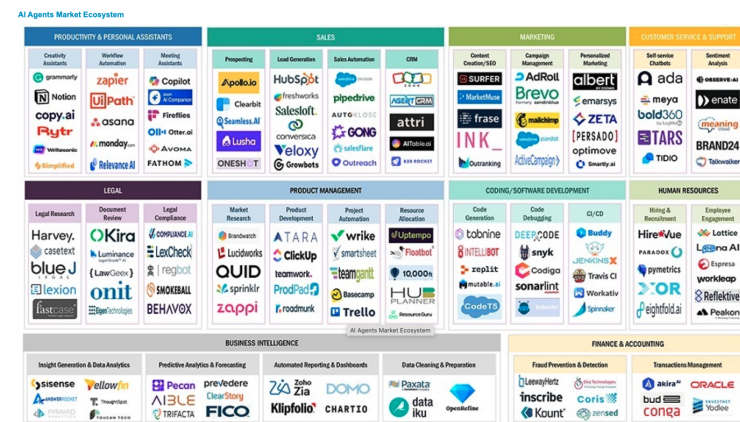
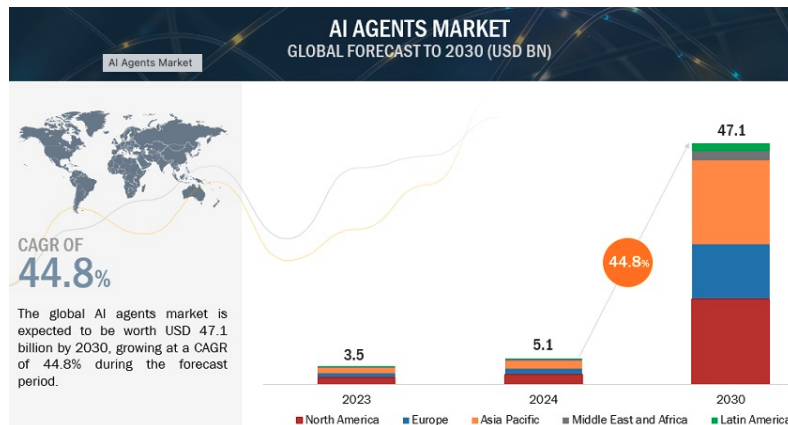
## Implications of success of LLMs

- many researchers change gears towards LLM
  - from computer vision (CV), speech, music, video, even reinforcement learning
- *LLM is not only about NLP . . .* humans have . . .
  - evolved to optimize natural language structures for eons
  - handed down knowledge using *this natural languages* for thousands of years
  - internal structure (or equivalently, representation) of natural languages optimized via *thousands of generation by evolution*
- LLM *connects non-linguistic world (open system) via natural languages (closed system)*



## Multimodal AI (mmAI)

- mmAI - systems processing & integrating data from multiple sources & modalities, to generate unified response / decision
- 1990s – 2000s - early systems - initial research combining basic text & image data
- 2010s - CNNs & RNNs enabling more sophisticated handling of multimodality
- 2020s - modern multimodal models - Transformer-based architectures handling complex multi-source data at highly advanced level
- mmAI *mimics human cognitive ability* to interpret and integrate information from various sources, leading to holistic decision-making

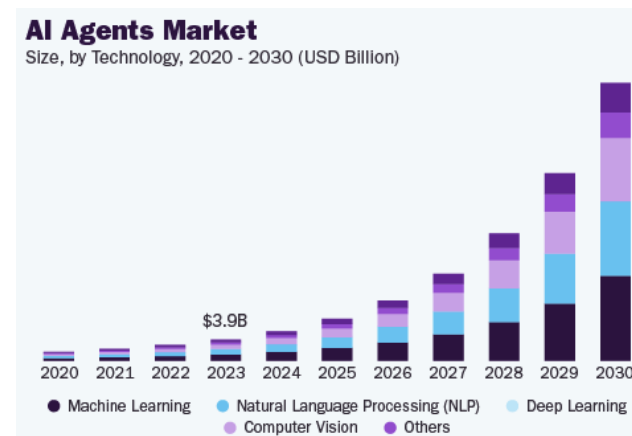
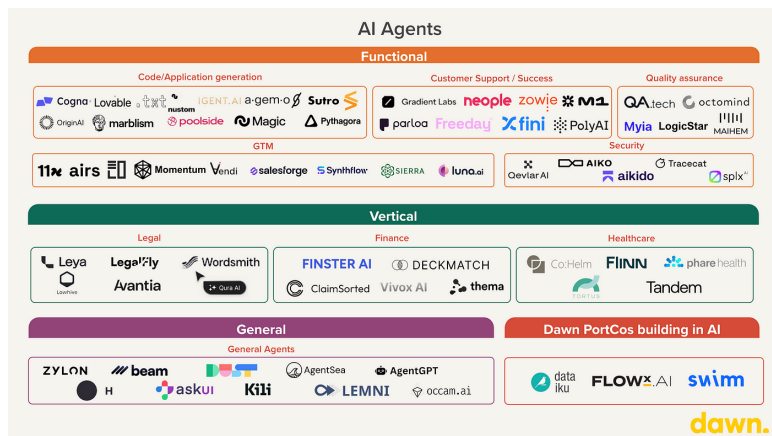


## mmAI Technology

- core components
  - data preprocessing - images, text, audio & video
  - architectures - unified Transformer-based (*e.g.*, ViT) & cross-attention mechanisms / hybrid architectures (*e.g.*, CNNs + LLMs)
  - integration layers - fusion methods for combining data representations from different modalities
- technical challenges
  - data alignment - accurate alignment of multimodal data
  - computational demand - high-resource requirements for training and inferencing
  - diverse data quality - manage variations in data quality across modalities
- advancements
  - multimodal embeddings - shared feature spaces interaction between modalities
  - self-supervised learning - leverage unlabeled data to learn representations across modalities

## AI agents powered by multimodal LLMs

- foundation
  - integrate multimodal AI capabilities for enhanced interaction & decision-making
- components
  - perceive environment through multiple modalities (visual, audio, text), process using LLM technology, generate contextual responses & take actions
- capabilities
  - understand complex environments, reason across modalities, engage in natural interactions, adapt behavior based on context & feedback



## AI agents - Present & Future

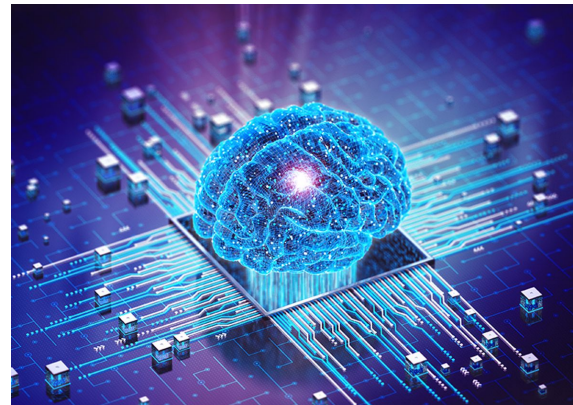
- emerging applications
  - scientific research - agents analyzing & running experiments & generating hypotheses
  - creative collaboration - AI partners in design & art combining multiple mediums
  - environmental monitoring - processing satellite sensor data for climate analysis
  - healthcare - enhanced diagnostic combining imaging, *e.g.*, MRI, with patient history
  - customer experience - virtual assistants understanding spoken language & visual cues
  - autonomous vehicles - integration of visual, radar & audio data
- future
  - ubiquitous AI agents - seamless integration into everyday devices
  - highly tailored personalized experience - in education, entertainment & healthcare



# **AI & Biotech**

## AI in biology

- AI has been used in biological sciences, and science in general
- AI's ability to process large amounts of raw, unstructured data (*e.g.*, DNA sequence data)
  - reduces time and cost to conduct experiments in biology
  - enables others types of experiments that previously were unattainable
  - contributes to broader field of engineering biology or biotechnology
- AI increases human ability to make direct changes at cellular level and create novel genetic material (*e.g.*, DNA and RNA) to obtain specific functions



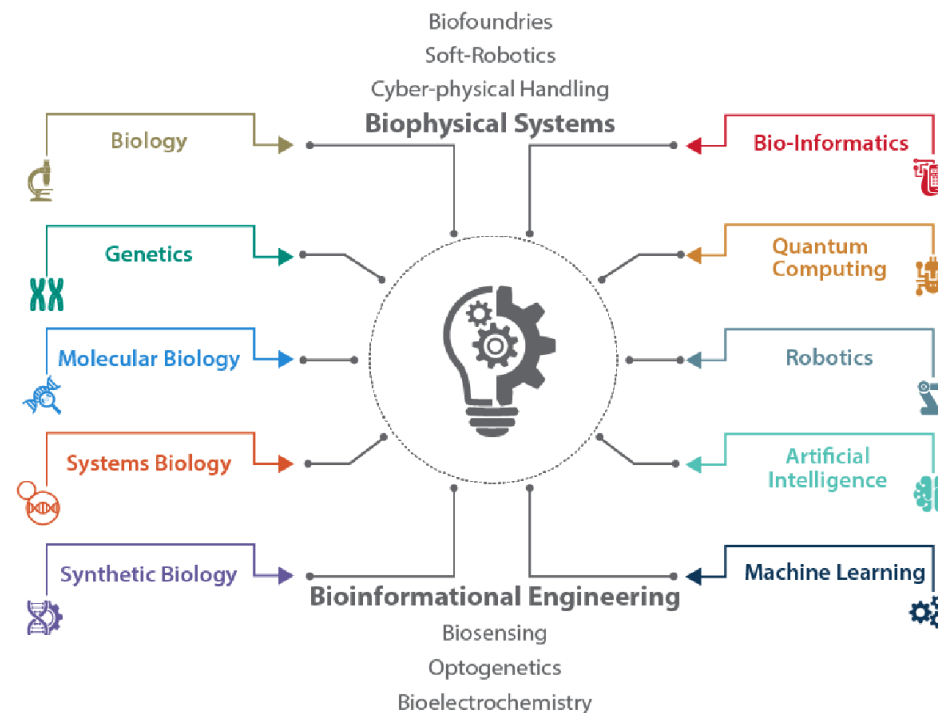
**Biotech**

## Biotech

- biotechnology
  - is multidisciplinary field leveraging broad set of sciences and technologies
  - relies on and builds upon advances in other fields such as nanotechnology & robotics, and, increasingly, AI
  - enables researchers to read and write DNA
    - sequencing technologies “read” DNA while gene synthesis technologies take sequence data and “write” DNA turning data into physical material
- 2018 National Defense Strategy & Senior US Defense and Intelligence Officials identified emerging technologies that could have disruptive impact on US national security [[Say21](#)]
  - [AI](#), lethal autonomous weapons, hypersonic weapons, directed energy weapons, [biotechnology](#), quantum technology
- other names for biotechnology are engineering biology, synthetic biology, biological science (when discussed in context of AI)

## Biotech - multidisciplinary field

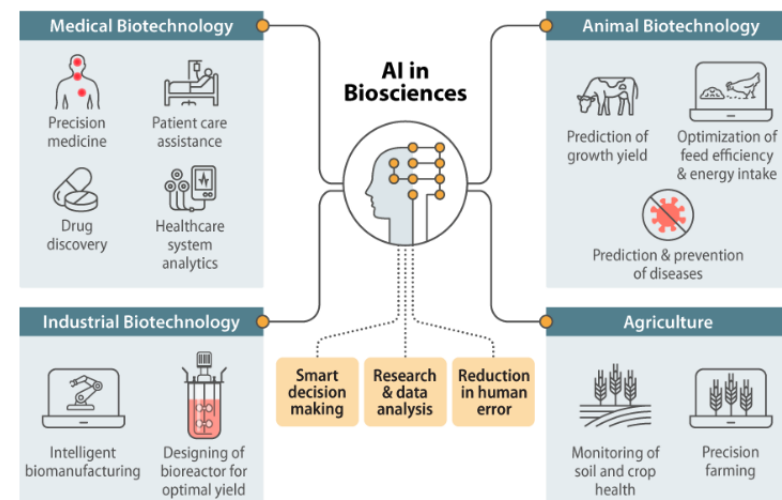
- sciences and technologies enabling biotechnology include (but not limited to)
  - (molecular) biology, genetics, systems biology, synthetic biology, bio-informatics, quantum computing, robotics [DFJ22]



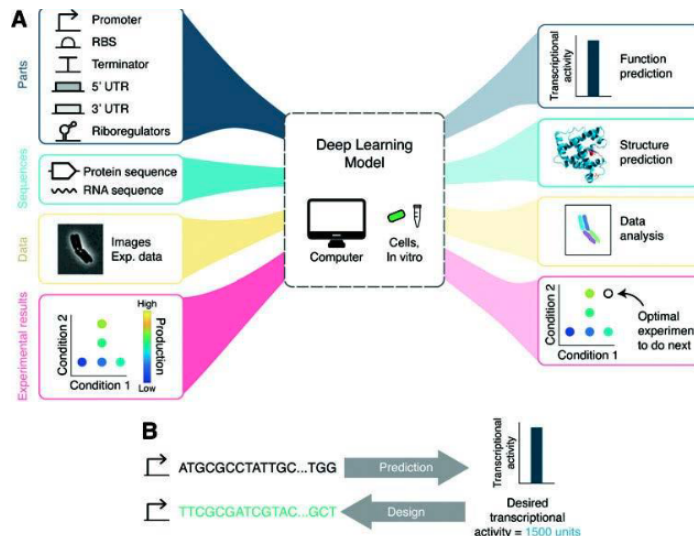
# Convergence of AI and biological design

- AI & biological sciences converging [BKP22]
  - each building upon the other's capabilities for new research and development across multiple areas
- Demis Hassabis, CEO & cofounder of DeepMind, said of biology [Toe23]
 

“. . . biology can be thought of as information processing system, albeit extraordinarily complex and dynamic one . . . just as mathematics turned out to be the right description language for physics, biology may turn out to be *the perfect type of regime for the application of AI!*”
- both AI & biotech rely on and build upon advances in other scientific disciplines and technology fields, such as nanotechnology, robotics, and increasingly big data (*e.g.*, genetic sequence data)
  - each of these fields itself convergence of multiple sciences and technologies
- so *their impacts can combine to create new capabilities*



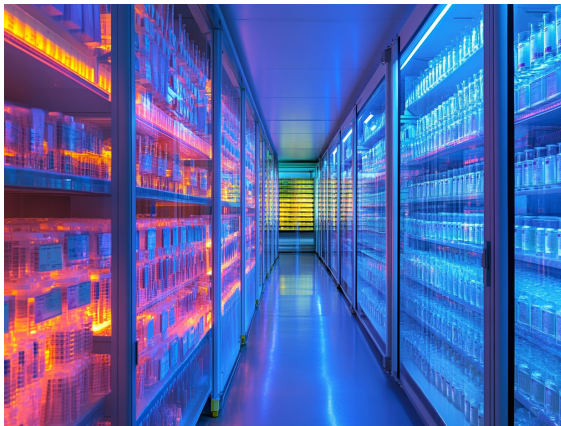
## Multi-source genetic sequence data



- AI, essential to analyzing exponential growth of genetic sequence data
  - “AI will be essential to fully understanding how genetic code interacts with biological processes” - US National Security Commission on Artificial Intelligence (NSCAI)
  - process huge amounts of biological data, *e.g.*, genetic sequence data, coming from different biological sources for understanding complex biological systems
    - sequence data, molecular structure data, image data, time-series, omics data
- *e.g.*, analyze genomic data sets to determine the genetic basis of particular trait and potentially uncover genetic markers linked with that trait

## Quality & quantity of biological data

- limiting factor, however, is *quality and quantity* of biological data, *e.g.*, DNA sequences, that AI is trained on
  - *e.g.*, accurate identification of particular species based on DNA requires reference sequences of *sufficient quality* to exist and be available
- databases have varying standards - access, type, and quality of information
- design, management, quality standards, and data protocols for reference databases can affect utility of particular DNA sequence



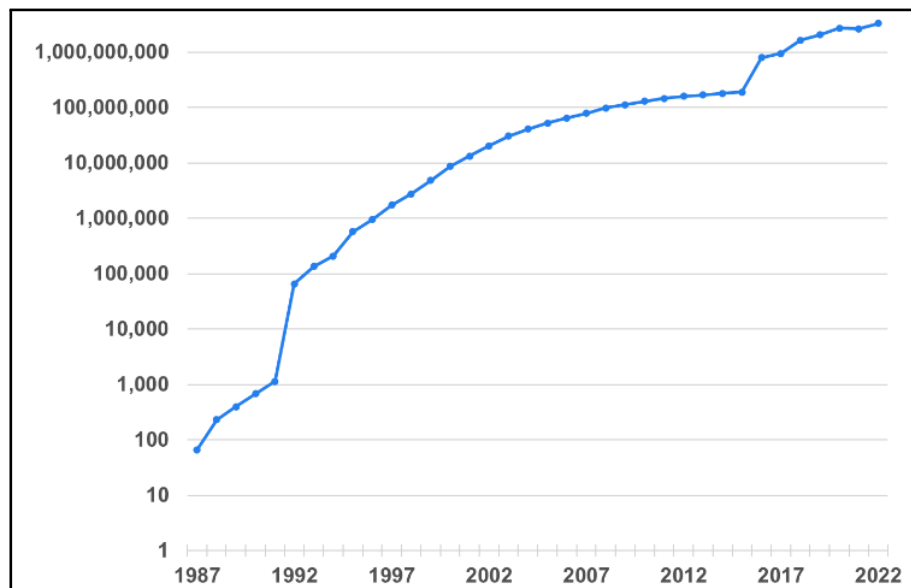
## Rapid growth of biological data

- volume of genetic sequence data grown exponentially as sequencing technology evolved
- more than 1,700 databases incorporating data on genomics, protein sequences, protein structures, plants, metabolic pathways, *etc.*, *e.g.*
  - open-source public database
    - Protein Data Bank, US-funded data center - more than *terabyte of three-dimensional structure data* for biological molecules, *e.g.*, proteins, DNA, RNA
  - proprietary database
    - Gingko Bioworks - more than *2B protein sequences*
  - public research groups
    - Broad Institute - produces roughly *500 terabases of genomic data per month*
- great potential value in aggregate volume of genetic datasets that can be collectively mined to discover and characterize relationships among genes

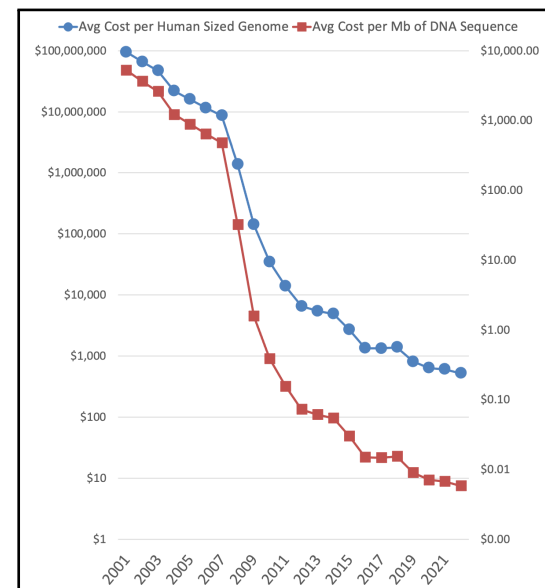
## Volume and sequencing cost of DNA over time

- volume of DNA sequences & DNA sequencing cost
  - data source: National Human Genome Research Institute (NHGRI) [Wet23] & International Nucleotide Sequence Database Collaboration (INSDC)
- *more dramatic than Moore's law!*

# sequences in INSDC



DNA sequencing cost



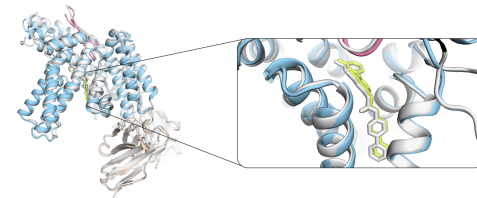
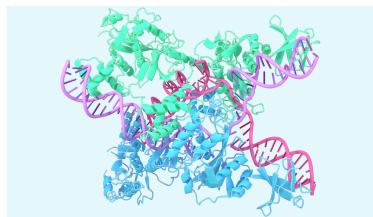
## Bio data availability and bias

- US National Security Commission on Artificial Intelligence (NSCAI) recommends
  - US fund and prioritize development of a biobank containing *“wide range of high-quality biological and genetic data sets securely accessible by researchers”*
  - establishment of database of broad range of human, animal, and plant genomes would
    - *enhance and democratize biotechnology innovations*
    - *facilitate new levels of AI-enabled analysis of genetic data*
- bias - availability of genetic data & decisions about selection of genetic data can introduce bias, *e.g.*
  - training AI model on datasets emphasizing or omitting certain genetic traits can affect how information is used and types of applications developed - *potentially privileging or disadvantaging certain populations*
  - access to data and to AI models themselves may impact communities of differing socioeconomic status or other factors unequally

# **Emerging Trends in Biotech**

# AlphaFold

- solving 50-year-old protein folding problem, *“one of biology’s grand challenges”*
  - definition - given amino acid sequence, predict how it folds into a 3D structure
  - proteins fold in microseconds, but predicting computationally nearly impossible
- AlphaFold 1 (2018) - DL + physics-based energy functions → AlphaFold 2 (2020)
  - attention-based NN solving protein folding “in principle” → AlphaFold 3 (2024) - diffusion-based DL, drug-protein interactions, protein complexes
- AlphaFold protein structure database
  - >200MM protein structures - nearly every known protein, used by >2MM researchers
- Applications & implications
  - drug discovery - target identification, lead optimization, side effect prediction
  - enzyme engineering, agriculture, environmental, vaccine development



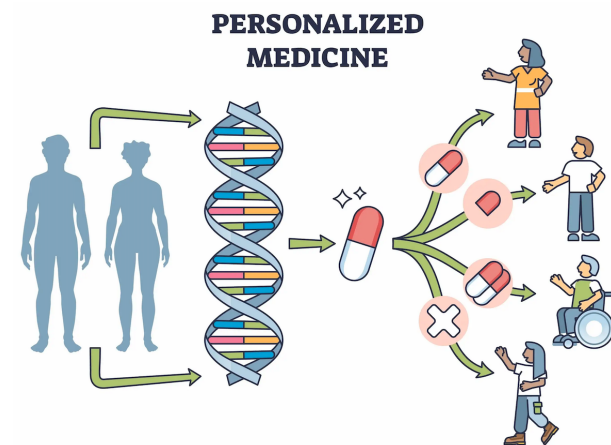
# AlphaGo

- Go board marked with  $19 \times 19$  grid -  $(19 \times 19)! = 361! \approx 1.44 \times 10^{768}$
- deep reinforcement learning with Monte Carlo tree search
  - trained on thousands of years of Go game history
  - AlphaGo Zero learns by playing against itself
- development experience, insight, knowledge, know-how transferred to AlphaFold

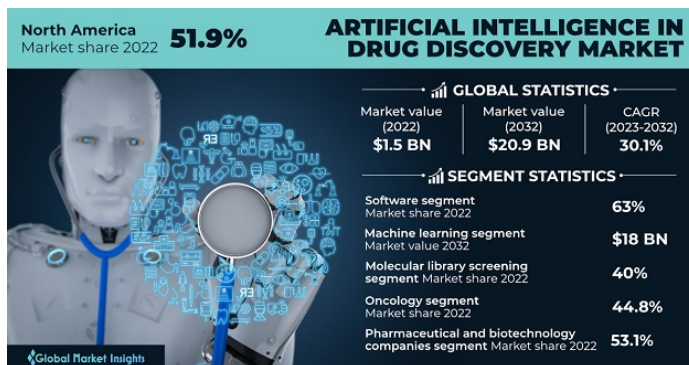
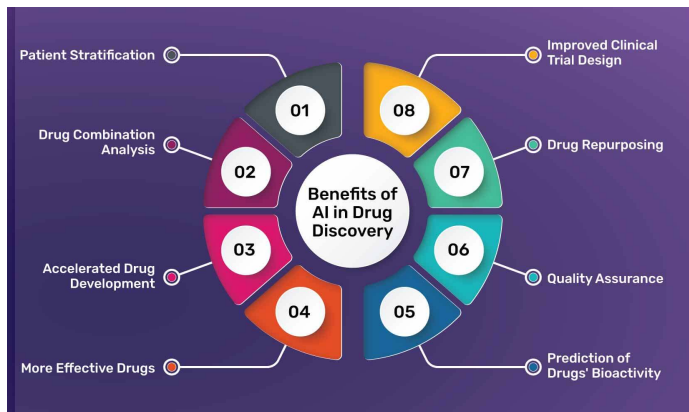


## Personalized medicine

- *shift from one-size-fits-all approach to tailored treatments*
- based on individual genetic profiles, lifestyles & environments
- AI enables analysis of vast data to predict patient responses to treatments, thus enhancing efficacy and reducing adverse effects
- *e.g.*
  - custom cancer therapies
  - personalized treatment plans for rare diseases
  - precision pharmacogenomics
- companies - Tempus, Foundation Medicine, *etc.*



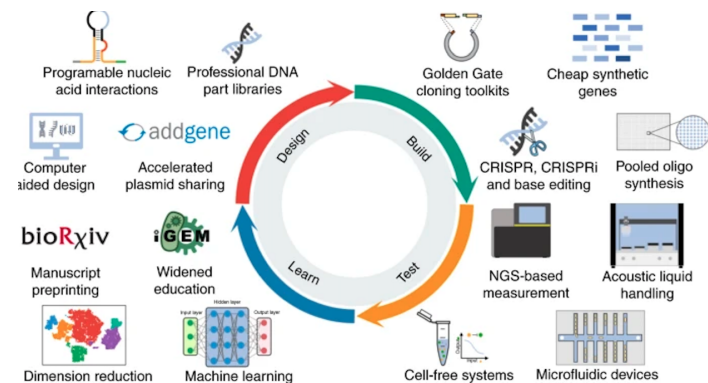
## AI-driven drug discovery



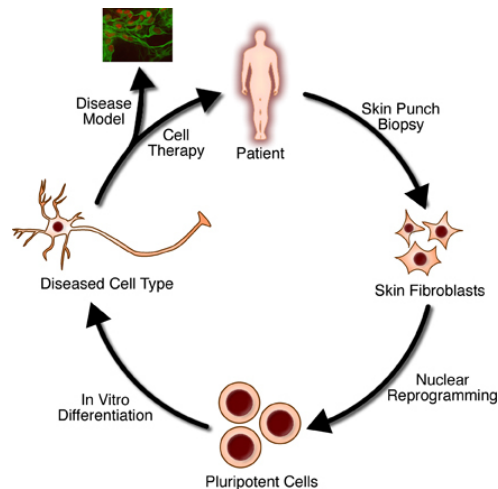
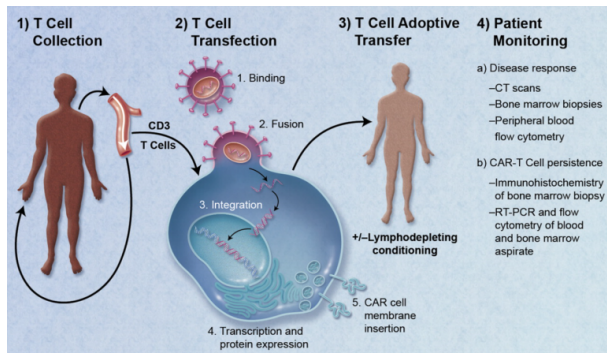
- traditional drug discovery process - time-consuming and costly often taking decades and billions of dollars
- AI streamlines this process by predicting the efficacy and safety of potential compounds with more speed and accuracy
- AI models analyze chemical databases to identify new drug candidates or repurpose existing drugs for new therapeutic uses
- companies - Insilco Medicine, Atomwise.

# Synthetic biology

- use AI for gene editing, biomaterial production and synthetic pathways
- combine principles of biology and engineering to design and construct new biological entities
- AI optimizes synthetic biology processes from designing genetic circuits to scaling up production
- company - Ginkgo Bioworks uses AI to design custom microorganisms for applications ranging from pharmaceuticals to industrial chemicals



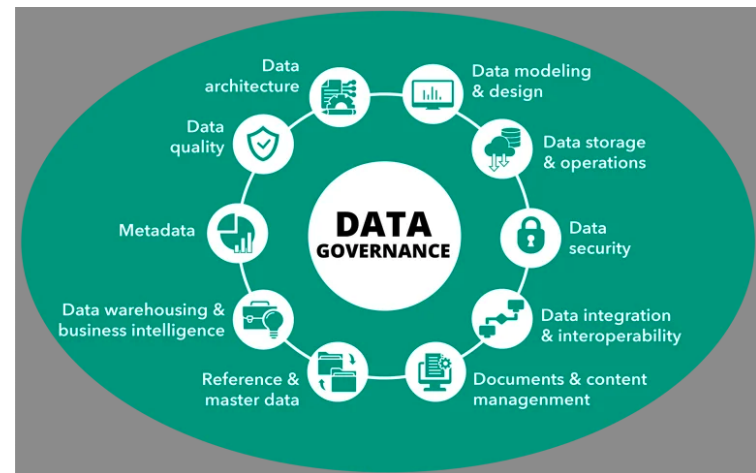
# Regenerative medicine



- AI advances development of stem cell therapies & tissue engineering
- AI algorithms assist in identifying optimal cell types, predicting cell behavior & personalized treatments
- particularly for conditions such as neurodegenerative diseases, heart failure and orthopedic injuries
- company - Organovo leverages AI to potentially improve the efficacy and scalability of regenerative therapies, developing next-generation treatments

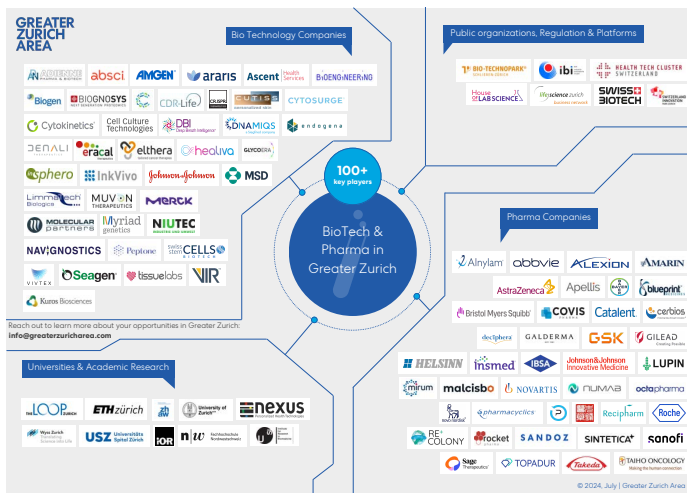
## Bio data integration

- integration of disparate data sources, including genomic, proteomic & clinical data - one of biggest challenges in biotech & healthcare
- AI delivers meaningful insights *only when* seamless data integration and interoperability realized
- developing platforms facilitating comprehensive, longitudinal patient data analysis - vital enablers of AI in biotech
- company - Flatiron Health working on integrating diverse datasets to provide holistic view of patient health



## Biotech companies

- Atomwise - small molecule drug discovery
- Cradle - protein design
- Exscientia - precision medicine
- Iktos - small molecule drug discovery and design
- Insilico Medicine - full-stack drug discovery system
- Schrödinger, Inc. - use physics-based models to find best possible molecule
- Absci Corporation - antibody design, creating new from scratch antibodies, *i.e.*, “de novo antibodies”, and testing them in laboratories



## **Selected References & Sources**

## Selected references & sources

- Chris Miller “Chip War: The Fight for the World’s Most Critical Technology” (2022)
- Daniel Kahneman “Thinking, Fast and Slow” (2011)
- M. Shanahan “Talking About Large Language Models” (2022)
- A.Y. Halevry, P. Norvig, and F. Pereira “Unreasonable Effectiveness of Data” (2009)
- A. Vaswani, et al. “Attention is all you need” @ NeurIPS (2017)
- S. Yin, et. al. “A Survey on Multimodal LLMs” (2023)
- I.J. Goodfellow, ..., Y. Bengio “Generative adversarial networks (GAN)” (2014)
- T. Kuiken “Artificial Intelligence in the Biological Sciences: Uses, Safety, Security, and Oversight” (2023)
- Stanford Venture Investment Groups
- CEOs & CTOs @ startup companies in Silicon Valley
- VCs on Sand Hill Road - Palo Alto, Menlo Park, Woodside in California, USA

# References

## References

- [BKP22] Abhaya Bhardwaj, Shristi Kishore, and Dhananjay K. Pandey. Artificial intelligence in biological sciences. *Life*, 12(1430), 2022.
- [DFJ22] Thomas A. Dixon, Paul S. Freemont, and Richard A. Johnson. A global forum on synthetic biology: The need for international engagement. *Nature Communications*, 13(3516), 2022.
- [HGH<sup>+</sup>22] Sue Ellen Haupt, David John Gagne, William W. Hsieh, Vladimir Krasnopolsky, Amy McGovern, Caren Marzban, William Moninger, Valliappa Lakshmanan, Philippe Tissot, and John K. Williams. The history and practice of AI in the environmental sciences. *Bulletin of the American Meteorological Society*, 103(5):E1351 – E1370, 2022.
- [HM24] Guadalupe Hayes-Mota. Emerging trends in AI in biotech. *Forbes*, June 2024.
- [Kui23] Todd Kuiken. Artificial intelligence in the biological sciences: Uses, safety, security, and oversight. *Congressional Research Service*, Nov 2023.

- [MLZ22] Louis-Philippe Morency, Paul Pu Liang, and Amir Zadeh. Tutorial on multimodal machine learning. In Miguel Ballesteros, Yulia Tsvetkov, and Cecilia O. Alm, editors, *Proceedings of the 2022 Conference of the North American Chapter of the Association for Computational Linguistics: Human Language Technologies: Tutorial Abstracts*, pages 33–38, Seattle, United States, July 2022. Association for Computational Linguistics.
- [Say21] Kelley M. Saylor. Defense primer: Emerging technologies. *Congressional Research Service*, 2021.
- [Toe23] Rob Toews. The next frontier for large language models is biology. *Forbes*, July 2023.
- [Wet23] Kris A. Wetterstrand. Dna sequencing costs: Data, 2023.
- [YFZ<sup>+</sup>24] Shukang Yin, Chaoyou Fu, Sirui Zhao, Ke Li, Xing Sun, Tong Xu, and Enhong Chen. A survey on multimodal large language models, 2024.

**Thank You**